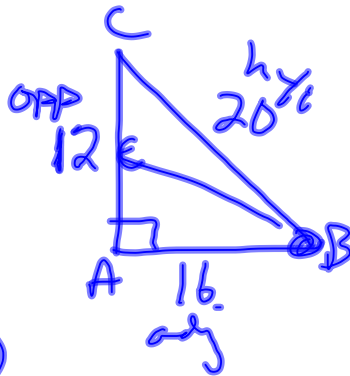


$$\text{Tan } A = \frac{\text{opp}}{\text{adj}}$$

1. Find Tan B

$$\frac{12}{16} = \frac{3}{4} \text{ or } .75$$

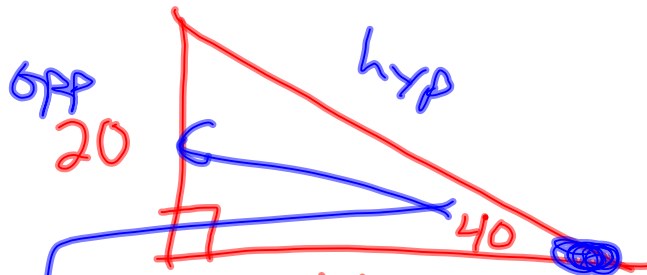


2. Evaluate  
Tan  $47^\circ$

$$1.0724$$

3. Find value of x.

$$\text{Tan } A = \frac{\text{opp}}{\text{adj}}$$



$$\frac{\text{Tan } 40}{1} = \frac{20}{x} \rightarrow x = \frac{20(1)}{\text{Tan } 40}$$

$$23.8$$

1 Answer?

Evaluate  $\tan 35^\circ$  to the nearest ten-thousandth.

A

B

C

D

A. 0.4738

B. 0.7002

C. 0.8192

D. 0.5736

2 Answer?

Find  $x$ .

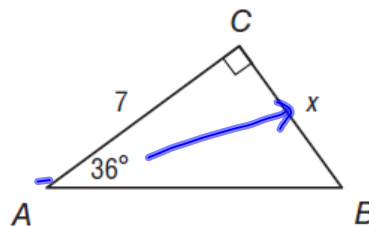
A 9.6

B 5.1

C .10

D 3.1

9.



$$\frac{\tan 36}{1} = \frac{x}{7} \quad \tan A = \frac{\text{opp}}{\text{adj}}$$
$$x = 7(\tan 36) \div 1$$

**5.1**

3 Answer?

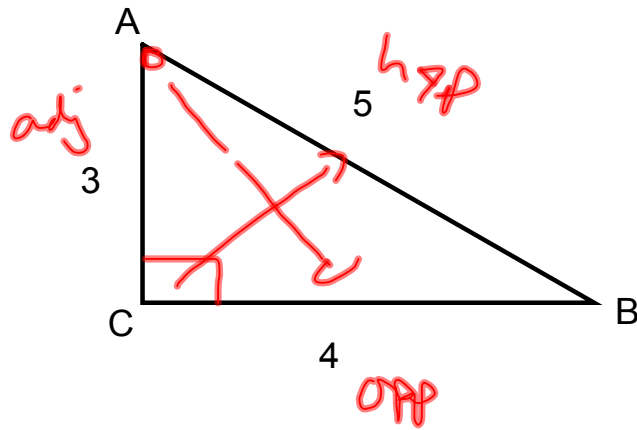
A  $3/4$

B  $4/5$

**C  $4/3$**

D  $3/5$

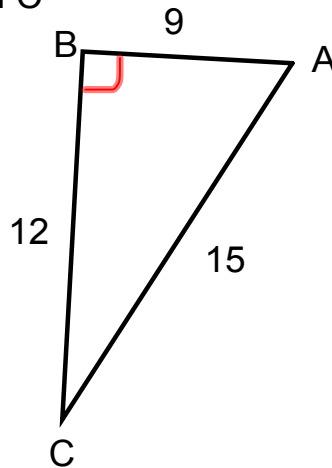
Find tan A



4 Answer?

Find tan C

$$\frac{9}{12} = \frac{3}{4}$$

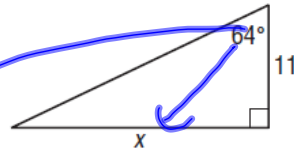


5 Answer?

- A 32.7
- B 5.4
- C -29
- D 22.6

Find  $x$ .

3.



$$\star \text{Tan } A = \frac{\text{opp}}{\text{adj}}$$

$$\text{Tan } 64 = \frac{x}{11}$$

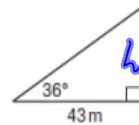
$$x = 11(\text{Tan } 64) \div 1$$

6 Answer?

- A 31.2
- B 42.6
- C -3.1
- D 59.2

$$\text{Tan } 36 = \frac{h}{43}$$

9. **GEOGRAPHY** Diego used a theodolite to map a region of land for his class in geomorphology. To determine the elevation of a vertical rock formation, he measured the distance from the base of the formation to his position and the angle between the ground and the line of sight to the top of the formation. The distance was 43 meters and the angle was  $36^\circ$ . What is the height of the formation to the nearest meter?



Pg 561 →  
# 13 - 29, 31-40